



VIMBLE[®]

3-Axis Stabilized Handheld Gimbal for SmartPhone

GuiLin FeiYu Technology Incorporated Company

User Manual EN V 2.0

User Guide



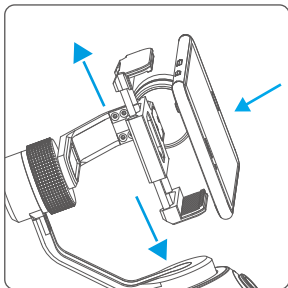
Attention !

- (1) Please install the smartphone before powering on the gimbal!
- (2) When not in use, turn off the gimbal and then remove the smartphone.

1 Install the phone

▲ Tips: Please take off the protective casing of the smartphone before installation.

Attach the smartphone with the quick-release adapter, and ensure it is secure.



2 Power on / off

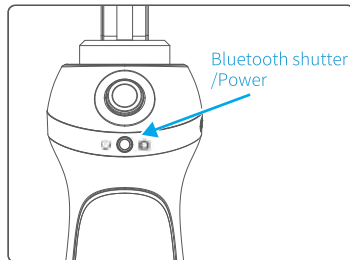
▲ Attention: Turn the gimbal on after the phone has been secured properly.
Prior to use, please be sure to fully charge the battery.



In case of low battery, the indicator will flash red 3 times every 5 seconds. Please charge the gimbal.

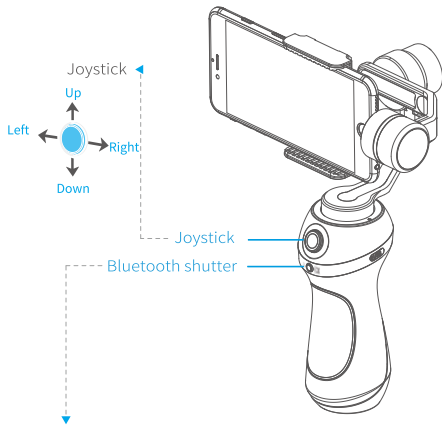
Power on: Short press **Bluetooth shutter/Power** 0.5s when the green light up, the gimbal turn on.

Power off: Long press **Bluetooth shutter/Power** at the same time 5s when the red light changes from quick flashing to constant on, the gimbal turn off.



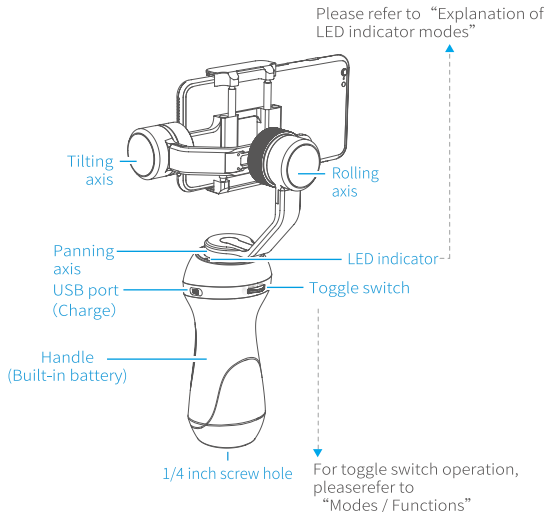
Product Overview

* The smartphone shown in the picture is only for reference

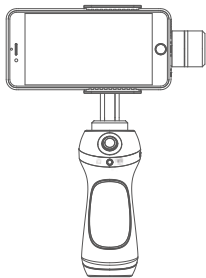


Bluetooth shutter operating instructions

- ① Press the bluetooth shutter to take a picture.
- ② Press and hold the bluetooth shutter for 1 second to start or stop recording a video.

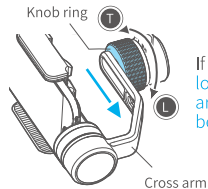
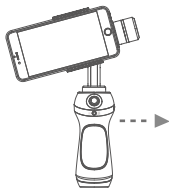


Balance Adjustment

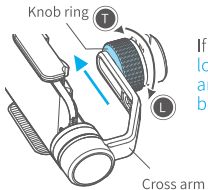
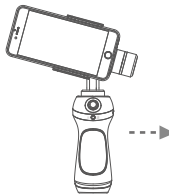


Best Balance

How to balance adjustment



If the iPhone tilted to the right, then loose the knob ring, move the cross arm to the left, try to adjust to the best balance then tight it.



If the iPhone tilted to the left, then loose the knob ring, move the cross arm to the right, try to adjust to the best balance then tight it.

Download and connect App

1 Download App

Download "Feiyu ON" and install it.

(1) iOS version:

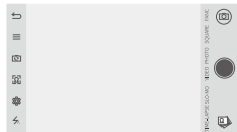


(2) Android version:



2 Connecting App

Start the app on your smartphone, follow the instructions to connect the smartphone with gimbal via bluetooth.



*Please scan the two-dimensional code via the browser.

Modes / Functions

Working Modes

Panning Mode

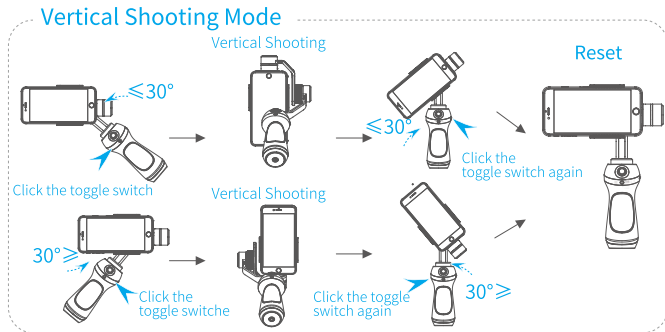
Tilting and rolling direction are fixed, and the camera lens moves according to the hand movement of the user.

Panning and Tilting Mode

The rolling direction is fixed, and the camera lens moves according to the hand movement of the user.

Lock Mode

The orientation of the camera is fixed.



Mode / Function Operating Instructions

Toggle switch Function Instructions	Modes / Functions	Explanation
Single tap	Panning and Tilting Mode	Boot default panning mode, press one time then switch to panning and tilting mode, press again switch to panning mode
Long press	Lock Mode	Under panning mode, panning and tilting mode, long press then switch to lock mode, release to go back
Triple tap	Reset	Reset the tilting axis of the gimbal to initial orientation and initial mode
Long press Bluetooth shutter/Power and Toggle switch 1s	Standby	Press the toggle switch again to wake up the gimbal
Left and right toggle	Zoom in / Zoom out	Need to connect mobile phone APP

Explanation of LED indicator

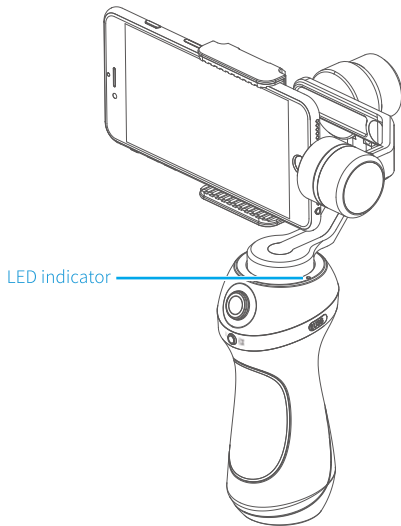
Note: The two RGB indicators have the same status

Gimbal operating mode and LED indicator:

RGB three-color lights	Mode / Status
Blue light flashes once	Panning
Blue light flashes twice	Panning and tilting mode
Blue light flashes three times	Standby
Blue light on steadily	Lock mode / Initializing
Blue light keeps flashing	Initialization failure / Malfunction
Red light flashes three times	Low power
Red light keeps flashing	Entering standby / Entering power off

LED indicator modes during charging:

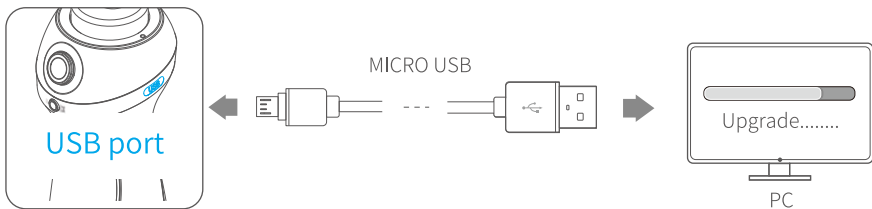
RGB three-color lights	Mode / Status
Green light	Fully charged
Red light	Gimbal is being charged



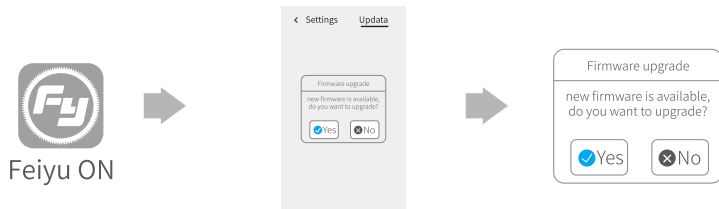
Firmware Upgrade

(1) Option 1: connect the gimbal with PC via micro USB cable, and then upgrade the firmware.

Please visit the official website www.feiyu-tech.com to download the relevant programs for upgrading, including USB driver, firmware upgrade software and product firmware, and install the relevant software, decompress the firmware files for standby application.



(2) Option 2: connect the gimbal with smartphone via bluetooth, and then upgrade the firmware.

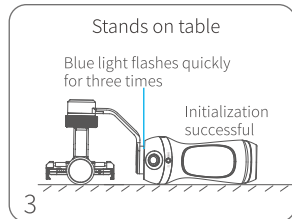
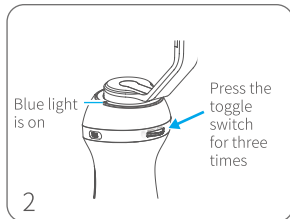
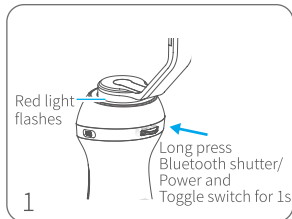


Gimbal initialization

You can initialize your gimbal :

- (1) when camera is not level
- (2) if not used for a long period of time
- (3) in case of extreme temperature variations

Adjusting steps:



Parameters

Titling Angle	320°	Titling Increments	min 2°/s max 75°/s
Rolling Angle	320°	Panning Increments	min 3°/s max 150°/s
Panning Angle	320°	Usage time	5 Hours
Adaption	iPhone series / HUAWEI P9 / HUAWEI P9 Plus / Mi 5 / MEIZU MX6 / SAMSUNG NOTE 5 / S7 or other smartphones with the similar dimensions		
Weight	420g (not including smartphone)		

DISCLAIMER

Prohibit any user for any illegal purpose. Users will be responsible for all behaviors of purchase and use products.

The Company assumes no liability for any risks related to or resulting from the debug and use of this product (including the direct, indirect or third-party losses).

For any unknown sources of using, we will not be at any services.

The updating and changes of product firmware and program may cause changes in function descriptions in this user manual, please read the instructions carefully before upgrading the firmware and use the corresponding user manual.

You can get the latest user manual from the official website: www.feiyu-tech.com

DelTron Interlligence reserves the right to amend this manual and the terms and conditions of use the product at any time.

Attention

- Please correctly assemble the gimbal in accordance with the diagram.
- Please install the phone before powering on the gimbal.
- When the gimbal is not in use or placed on the table, please ensure it is powered off.

GuiLin FeiYu Technology Incorporated Company

Website: www.feiyu-tech.com

E-mail: service@feiyu-tech.com

Tel: +86 (0)773 2320866

Due to software and hardware improvements, your actual product might differ from the descriptions and pictures in this user manual. You can get the latest user manual from the official website.

For more information, please visit our official website

